



**iMediaTouch**  
Enterprise

## Radio Automation and Content Management



iMediaTouch Enterprise

# Innovation in Radio Automation

888-665-0501

sales@imediataouch.com

www.imediataouch.com



## Multi-View



The unique Multi-View Module provides quick access to content meta data and system functions from one screen. Addition any audio element on a dedicated discrete channel with a dedicated meter on the header bar. Simple tab access to additional features:

- Info – provides detailed meta data display and auditioning for audio content. The Info Tab also provides “right-click” access for any audio element on the screen.
- Back Sell – display of last played and upcoming songs
- Alert – display of alert messages
- Copy – live copy read text with “Confirm Read” to affidavit log
- Status – system status information
- Feeds – list of available live feeds
- Nexus – Music Master song substitution live interface

## Show Log



Hot start “Cart Wall” for on demand instant playback of beds, sound effects, ID’s, feeds and any audio item in the library. Play or insert to current schedule. Color coded by category for quick recognition. Support for 4 discrete audio channels and up to 32 virtual audio channels with a dedicated meter in the header bar.

- 200 show logs with 28 items each
- Customizable button labels
- Color coded by category
- Rotation support
- Drop liner integration for satellite automation

## Show Log +



A second hot start “Cart Wall” with all the features of the Show Log plus a “Segue Play” mode for automated playback of a series of audio items. Support for 4 discrete audio channels and up to 32 virtual audio channels.

- 200 show logs with 28 items each
- Customizable button labels
- Color coded by category
- Rotation support

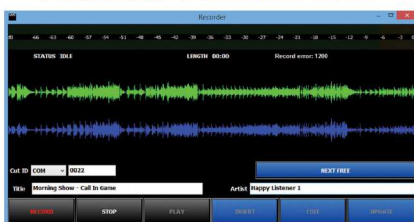
## Full Log



Access to the full current day schedule including past, current and future schedule items. Comprehensive schedule controls supporting both mouse and touch screen interfaces to view and organize schedule elements to finesse your program delivery. Drag and drop from the audio library, move schedule elements within the full log and into the main log.

- Full day schedule management
- Drag and Drop element manipulation
- Swap elements

## Audio Recorder



Instantly record and edit audio for immediate playback, insertion into mail log or archive for future use. Great for phone bits and other ad-hoc recording needs.

- Instant record and edit
- Immediate live playback
- Store to audio library
- Insert into Full Log

Optional Modules	Full suite of optional modules for a complete solution
<b>Production</b>	Advanced audio production and content management system featuring: <ul style="list-style-type: none"> <li>• SQL CMS audio content management system</li> <li>• Record, edit and transcode various formats</li> <li>• Waveform editing with multiple edit decision lists</li> <li>• Audio import and CD Ripping</li> <li>• Audio Normalization</li> <li>• Supports sequential and weighted rotations, activate dates and expire dates</li> </ul>
<b>iMediaPortal</b>	Web based access to the Enterprise SQL CMS where Web users can search, browse, play and download media. Featuring: <ul style="list-style-type: none"> <li>• Station information (eg: OnAir status)</li> <li>• Station AsRun logs</li> <li>• Audio asset transaction log</li> <li>• Advanced search</li> <li>• Upload and import content</li> </ul>
<b>Log Tools</b>	Integrated schedule creation, management and reporting system featuring: <ul style="list-style-type: none"> <li>• Real Time connectivity to On-Air for current day changes</li> <li>• Audio auditioning of schedules</li> <li>• Integrated to SQL CMS audio library</li> <li>• Traffic and music reconciliation with reporting</li> <li>• Clock template generator for satellite and live programming</li> <li>• Import and merge schedules from traffic and music systems</li> </ul>
<b>Voice Tracking Local and Remote</b>	Sophisticated voice tracking system to produce a "Better than Live" sound. Key features include: <ul style="list-style-type: none"> <li>• Seek to voice track segment</li> <li>• Interactive audio auditioning</li> <li>• Real time connectivity to On-Air for current day productions</li> <li>• Dynamic adjustment of segue and volume</li> <li>• Auto post and duck for quick professional sound</li> <li>• Drag and drop sound effects and beds.</li> <li>• Remote Voice Track Portal</li> </ul>
<b>On-Air Remote</b>	Full function On-Air for remote operation of your broadcast system. Use in the studio over the LAN or remotely over an internet connection. Up to 4 simultaneous remote connections for unique and flexible configurations.
<b>iMediaImport</b>	Automatic import of audio content. Simplify import of programming, production house spot delivery, music and import of post-production content from third party applications. Includes our FTP scheduler to automate show and spot downloads based on time or frequency. <ul style="list-style-type: none"> <li>• Weekday selection</li> <li>• Time selection in hourly or specific minute</li> <li>• Category selection with base ID</li> <li>• ID logic assignment including number search</li> <li>• Filename matching</li> </ul>
<b>Reliability</b>	
<b>On-Air Teaming</b>	Never miss a beat with this robust fault tolerance configuration providing a fully synchronized primary and secondary hot standby.
<b>Store &amp; Forward</b>	Advanced capabilities for automatic back-up of database, content and schedules to/from the main On-Air featuring automated fail-over and fail-back to master.
<b>Compatibility</b>	
<b>Audio Equipment</b>	<ul style="list-style-type: none"> <li>• Compatible with most WDM based audio cards, and Broadcast Tool switchers and I/O devices</li> <li>• Supports AoIP with Wheatstone and Axia consoles</li> </ul>
<b>Computer Hardware</b>	<ul style="list-style-type: none"> <li>• Compatible with Windows™ 7/8 Pro and Intel™ i series workstations</li> <li>• Compatible with Windows™ Server 2008, Server 2012</li> </ul>
<b>Music &amp; Traffic Systems</b>	Compatible with most music and traffic scheduling systems including MusicMaster, Marketron, SDS, Natural, WideOrbit, Selector, PowerGold and many more.
<b>Options</b>	
<b>System Integration</b>	Complete solutions including software, hardware and training. Fully integrated and tested solutions for a wide range of broadcast applications.